



## SPT/UC SERIES

### Sandwich/Salad Prep Units, Undercounter Refrigerators And Freezers

#### SANDWICH/SALAD PREP UNITS

- SPT-28     SPT-48     SPT-72

#### UNDERCOUNTER REFRIGERATORS

- UC-28SR     UC-48DR     UC-72TR

#### UNDERCOUNTER FREEZERS

- UC-28SF     UC-48DF

## FEATURES

### CONSTRUCTION

- Design meets NSF 7 criteria
- Stainless steel exterior
- Bright white ABS interior on all models except SPT-72 and UC-72TR. These models have stainless steel interior.
- 1<sup>3</sup>/<sub>4</sub>" foamed-in-place "low ODP" urethane insulated walls and doors
- Standard recessed door handles
- Adjustable, heavy-duty wire shelves
- Four 5" diameter casters (2 locking, 2 non-locking)
- Stainless steel louver distributes air to all areas of the unit
- Louver is food acid and stain resistant

- Door width:
  - SPT-28, UC-28SR, UC-28SF .....27<sup>3</sup>/<sub>8</sub>"
  - SPT-48, SPT-72, UC-48DR, UC-72TR, UC-48DF .....23<sup>7</sup>/<sub>8</sub>"

### REFRIGERATION

- Refrigerant:
  - SPT models, UC-R models and UC-28SF ..... R-134a
  - UC-48DF.....R-404A
- Forced-air refrigeration system
- Two fans for optimum cooling efficiency
- Self-contained, no plumbing required
- Minimum 5" clearance required between cabinet back and wall

- Temperature range:
  - SPT and UC-R models .....33° to 41°F (1° to 5°C)
  - UC-F models ..... -11° to -3°F (-24° to -19°C)
- R-factor (insulation efficiency rating): 14.58

### WARRANTY

- Standard limited four year extended compressor and one year limited parts and labor

## OPTIONS

- Legs
- Back splash guard for UC models
- 2" casters for UC models (reduces height to 33<sup>1</sup>/<sub>2</sub>" )



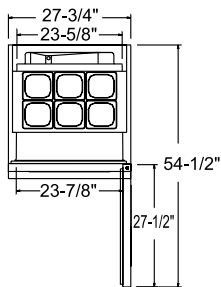
# SPT/UC SERIES

## SANDWICH/SALAD PREP UNITS, UNDERCOUNTER REFRIGERATORS AND FREEZERS

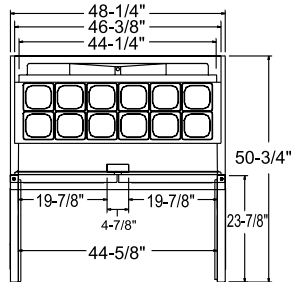
### TECHNICAL SPECIFICATIONS

MODEL	DIMENSIONS (in.)			DIMENSIONS (mm)			VOLTS	AMPS	UNIT H.P.	NO. OF SHELVES	NO. OF 1/6 SIZE PANS**	CAP. CU. FT.	SHIP CU. FT.	SHIP WT. LB/KG
	L	D	H*	L	D	H*								
<b>SANDWICH/SALAD UNITS</b>														
SPT-28	27 <sup>3</sup> / <sub>4</sub>	30	43	705	762	1092	115	5.5	1/4	2	6	6.5	29.0	198/90
SPT-48	48 <sup>1</sup> / <sub>4</sub>	30	43	1226	762	1092	115	5.0	1/3	4	12	12.0	48.4	264/120
SPT-72	72 <sup>3</sup> / <sub>4</sub>	30	43	1848	762	1092	115	10.8	5/8	6	18	19.0	67.7	385/175
<b>UNDERCOUNTER REFRIGERATORS</b>														
UC-28SR	27 <sup>3</sup> / <sub>4</sub>	30	36	705	762	914	115	4.0	1/5	2	N/A	6.5	24.8	178/81
UC-48DR	48 <sup>1</sup> / <sub>4</sub>	30	36	1226	762	914	115	4.0	1/5	4	N/A	12.0	40.5	244/111
UC-72TR	72 <sup>3</sup> / <sub>4</sub>	30	36	1848	762	914	115	7.0	1/3	6	N/A	19.0	58.6	340/155
<b>UNDERCOUNTER FREEZERS</b>														
UC-28SF	27 <sup>3</sup> / <sub>4</sub>	30	36	705	762	914	115	7.5	1/3	2	N/A	6.5	24.8	190/86
UC-48DF	48 <sup>1</sup> / <sub>4</sub>	30	36	1226	762	914	115	11.5	3/5	4	N/A	12.0	40.5	260/118

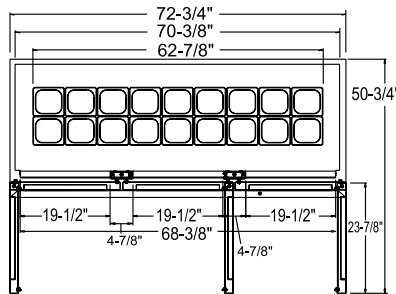
\*Height includes casters. \*\*Pans are 4" deep, 1.5L capacity.



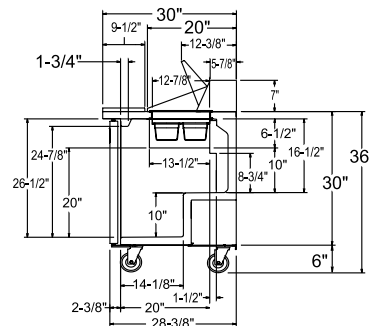
**SPT-28**



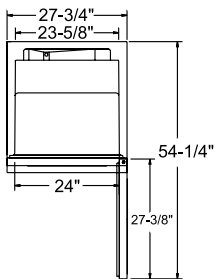
**SPT-48**



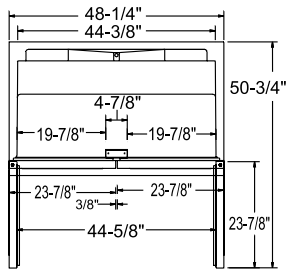
**SPT-72**



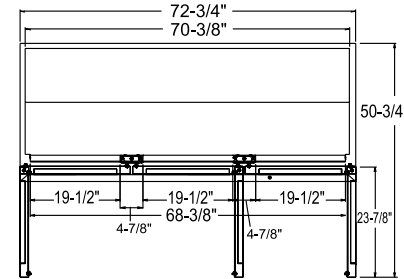
**SIDE**



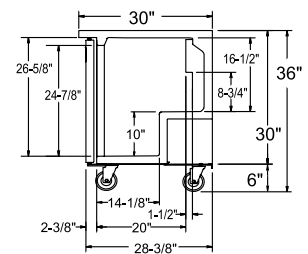
**UC-28SR/SF**



**UC-48DR/DF**



**UC-72TR**



**SIDE**

### LISTINGS

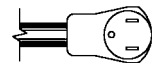


(UC models only)

California Energy Commission Certified

### HOOKUP

Via plug in, 10 foot long, flexible 3 wire 16/3 cord with molded plug.



NEMA 5-15P

### BID SPECIFICATIONS

Item no. SPT-\_\_\_\_\_ and/or UC-\_\_\_\_\_. Provide \_\_\_\_\_ ( ) Sandwich/Salad Preparation Units and/or Undercounter Refrigerators or Freezers, Master-Bilt model no. SPT-\_\_\_\_\_ and/or UC-\_\_\_\_\_.

Model design will meet NSF 7 criteria. Exterior finish will be stainless steel. Units will have bright white ABS interior except for SPT-

72 and UC-72TR which will be stainless steel. Standard features include adjustable, heavy-duty wire shelves and 5" diameter casters. All doors to have standard recessed handles.

SPT models, UC-R models and UC-28SF will contain R-134a refrigerant. UC-48DF will contain R-404A. The temperature range for SPT and UC-R models will be 33° to 41°F (1° to

5°C). The range for UC-F models will be -11° to -3°F (-24° to -19°C). All models to have a standard limited 4 year extended compressor and one year limited parts and labor warranty. Cabinets to be UL, C-UL and NSF listed and California Energy Commission certified. UC models to be Energy Star certified.

**NOTE:** Cabinet designed for optimum performance in air-conditioned area at 75°F ambient and 55% relative humidity. All specifications subject to change without notice.



908 Highway 15 North • New Albany, MS 38652

PHONE: 800-647-1284 or 662-534-9061 • FAX: 800-232-3966 or 662-534-6049 • www.master-bilt.com

